

Environmental Justice Elements Planning Initiative



Burlingame Workshop | April 23, 2024

Meeting Overview

» Informational Presentation

- Background Information
- Overview of the Environmental Justice Elements Planning Initiative

» Questions & Answers

» Gallery Walk

» Reconvene and Close



What is Environmental Justice?

- » **Everyone has the right to the same environmental protections and involvement in the decision-making process.**
- » **Requires governments to correct laws, policies, and regulations that have:**
 - Created systemic racism and oppression.
 - Placed low-income communities and communities of color in more polluted environments.
- » **Requires robust and equitable engagement with affected communities.**



California Law

California law requires that counties and cities address environmental justice by:

- Identifying communities that suffer from environmental injustices (i.e., “disadvantaged communities”)
- Assessing conditions and challenges in these communities
- Adding policies in the General Plan to address these injustices



Identifying “Disadvantaged Communities”

- » Disadvantaged communities are defined in State law as low-income communities experiencing high levels of pollution and other health hazards



* State law uses the term “disadvantaged community.” What term would you prefer we use in the Environmental Justice Element?

Environmental Justice Issues



Pollution exposure and air quality



Access to healthy and affordable food and groceries



Access to safe, sanitary, and stable homes



Access to recreational opportunities and physical activity



Access to effective public services and facilities



Exposure to climate hazards, extreme weather, and other health risks



Ability to engage in government procedures



Other issues specific to a community

What is a General Plan?

» “Blueprint” for Growth & Development

- Establishes community vision and supporting goals, policies, and actions
- Provides direction for future development and City decision-making
- Includes eight mandatory sections or “elements”



What is an “Element”

State law requires that General Plans contain eight mandatory sections or “elements.”
The State provides flexibility in how the elements are organized.



Land Use



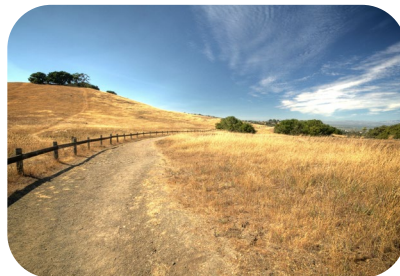
Circulation



Housing



Conservation



Open Space



Noise



Safety



**Environmental
Justice**

What is the Environmental Justice Elements Planning Initiative?

» Collaborative effort:

- Burlingame
- East Palo Alto
- San Mateo County

» Prepare/update environmental justice elements in each jurisdiction



Environmental Justice Elements Planning Initiative Process

» Four steps:

1. Research Environmental Justice Issues and Communities
2. Engage Communities
3. Develop Draft Environmental Justice Elements
4. Adopt the Environmental Justice Elements



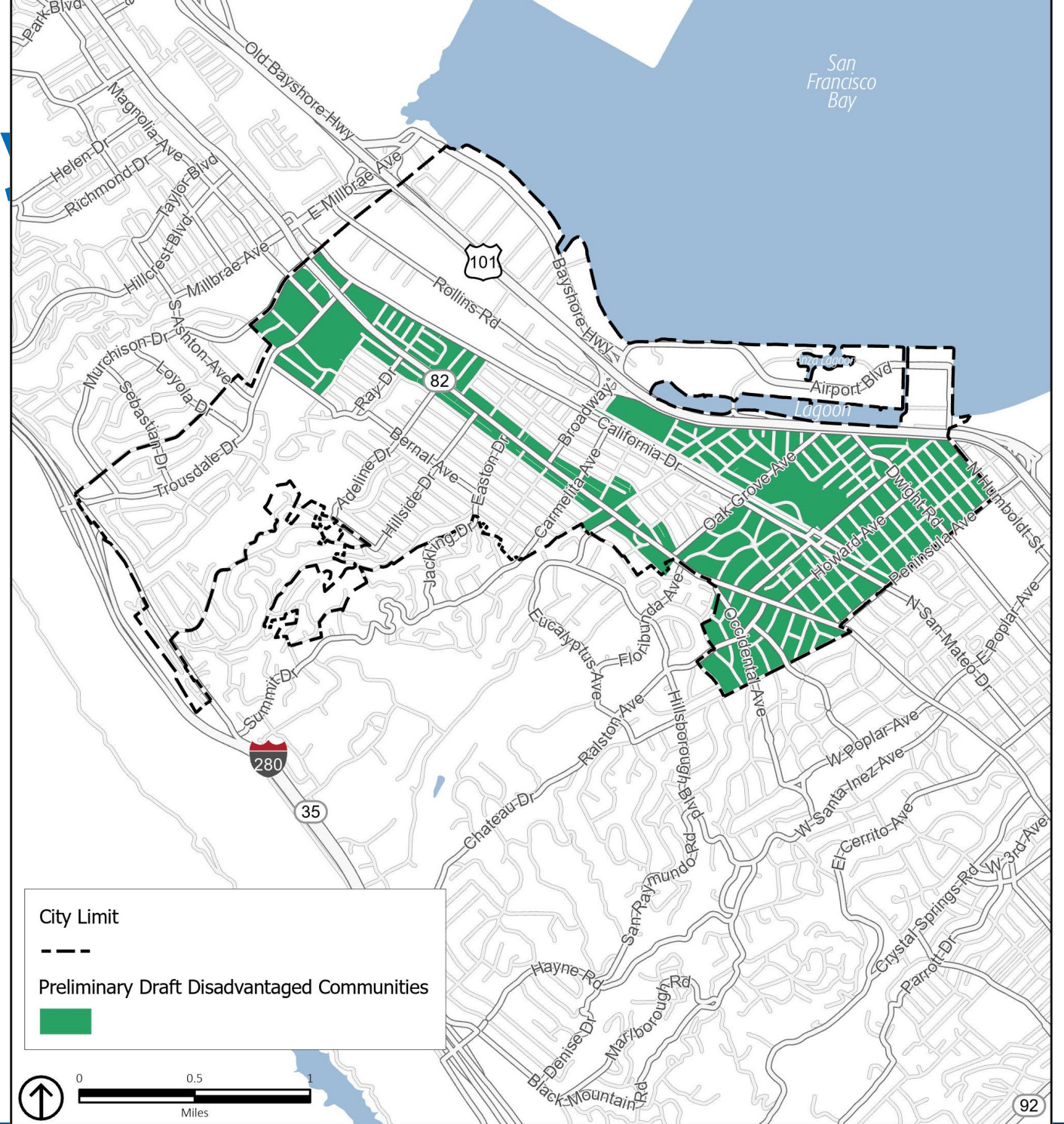
✓ Step 1: Research EJ Issues and Communities

- » Research environmental justice issues
- » Identify preliminary disadvantaged communities based on available data



Burlingame Preliminary Draft Disadvantaged Communities Map

- Vulnerable populations along El Camino Real
- Displacement risk in southeast area
- Relatively high unemployment, community of color in northwest area



Step 2: Engage Communities

- » Local knowledge and expertise
- » Vet and ground truth the preliminary mapping
- » Learn more about the issues faced in these communities



Community Engagement Opportunities

- » **Community engagement is critical**
- » **Ways to participate:**
 - In-person workshops
 - In-person door to door surveys
 - Interactive map-based online survey
- » **Visit the project website to stay up to date with the latest opportunities!**

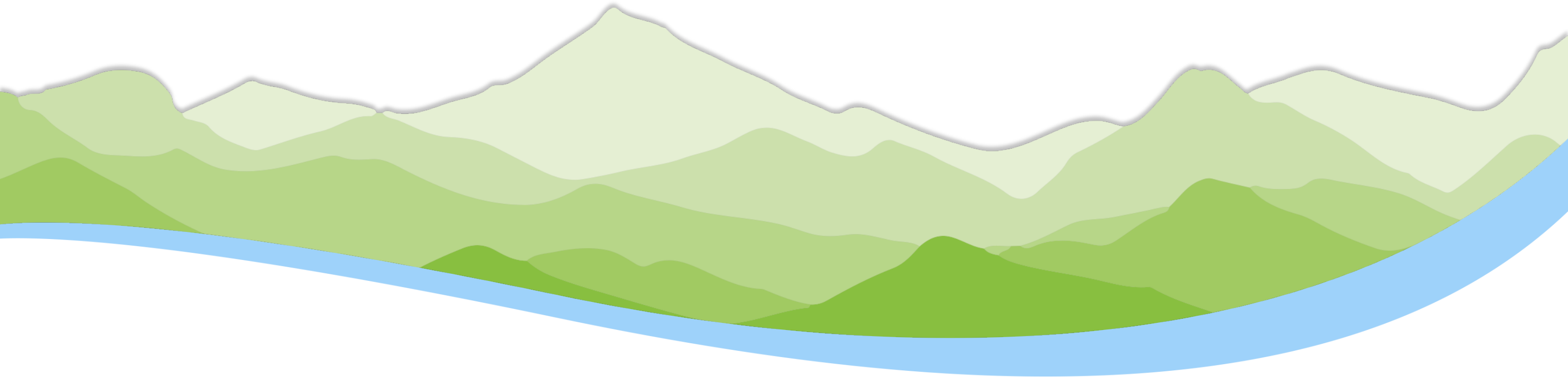
envirojusticeplanning.com



What's Next?

- » **Step 3: Prepare the Draft Environmental Justice Elements (this summer through spring 2025)**
- » **Step 4: Adopt the Environmental Justice Elements (summer 2025)**





Questions?

Gallery Walk Activity

» Overview

- We want to hear from you!
- Pieces of the Burlingame Environmental Justice Element are on boards around the room and need your thoughts added.

» Directions

- Use sticky dots to vote on priority issues and share your thoughts with notetakers and facilitators near each board.
- Ask questions, share your reasoning behind voting, and listen to fellow participants.

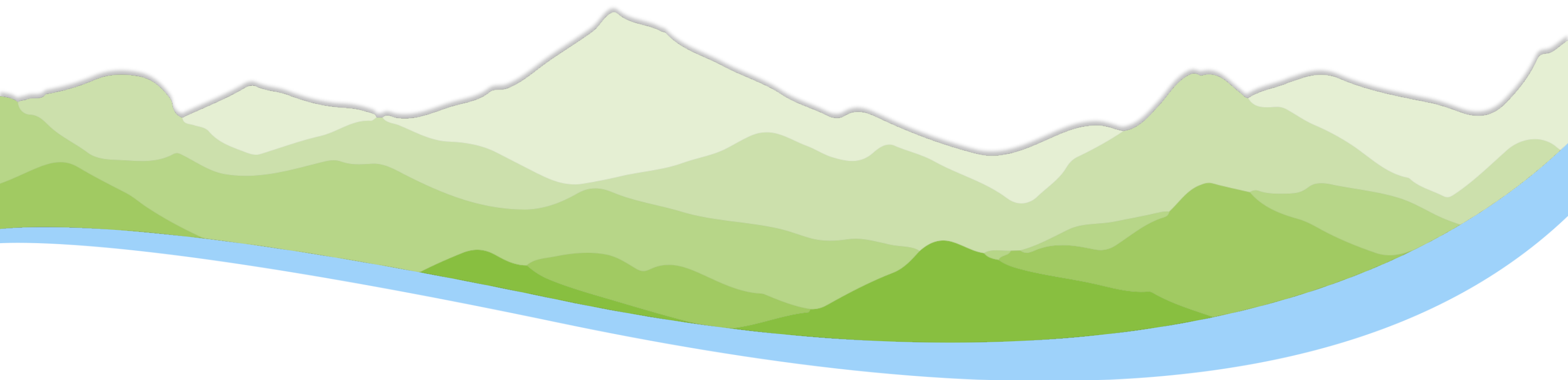
» Activity Time

- 1 hour

Next Steps

- » **Continue community engagement**
 - Workshops in East Palo Alto and County
 - Community surveys
 - Interviews with community-based organizations
- » **Refined maps and issues**
- » **Policy development**
- » **Draft environmental justice element**
- » **Community review and input**





Thank you!

CO-PLACEWORKS

